

# ESR-9753 Wireless Broadband Router

## Quick Start Guide

Connect the supplied power-adaptor to the power inlet port and connect it to a wall outlet. Then, the router automatically enters the self-test phase. During self-test phase, Power LED will blink briefly, and then will be lit continuously to indicate that this product is in normal operation.

### CHECK

- A standard CD-ROM drive
- Internet connection should be setup & ready to use (ADSL or cable modem).
- Modem must provide RJ45 port to connect with ESR-9753.
- Microsoft Windows compatible PC/Notebook with UPnP enabled network adapter
- CAT 5 network cable(s), RJ45 port on PC/Notebook.

### STEP 1

Connect **ESR-9753 WAN** port & your **modem WAN** port with RJ45 cable.

### STEP 2

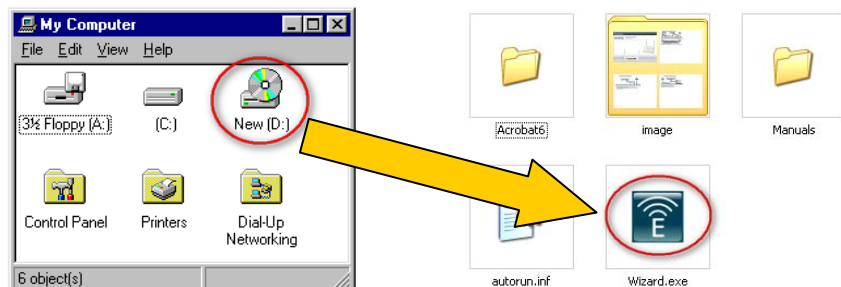
Power up **ESR-9753**.POWER led on front panel lights up & remains stable.

### STEP 3

Connect **ESR-9753 LAN** port & **PC/Notebook RJ45** port with network cable.

### STEP 4

Insert **Wizard CD** into your CD-ROM drive and browse it with Windows Explorer.



Click on **"Wizard.exe"** to activate SMART WIZARD.

### Step 5

Click on **[Setup Wizard]** and follow the instruction given on the screen to complete the initial device configuration.



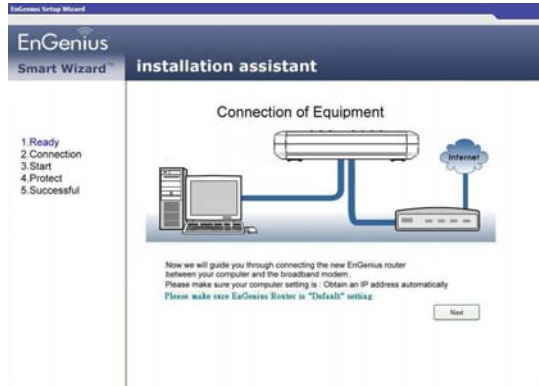
### Step 6

Click Next to Proceed with the wizard on the connection of the router.



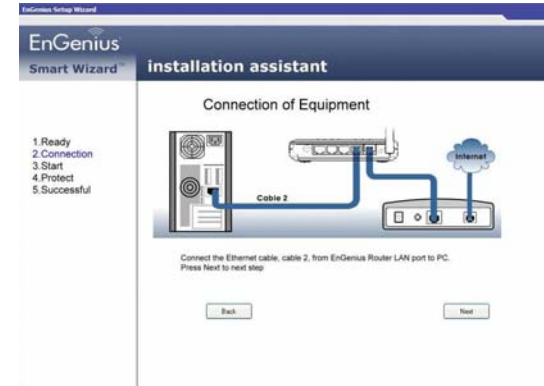
**Step 7**

Click 'Next' to start connection



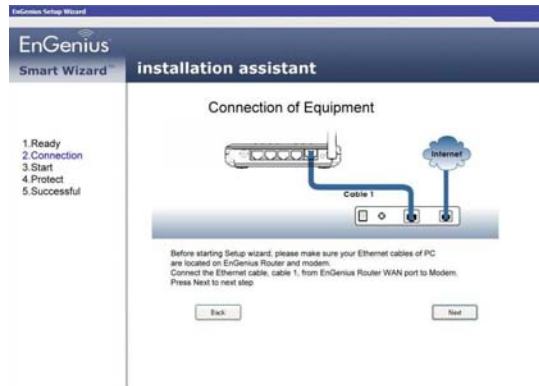
**Step 9**

Click 'Next' to proceed



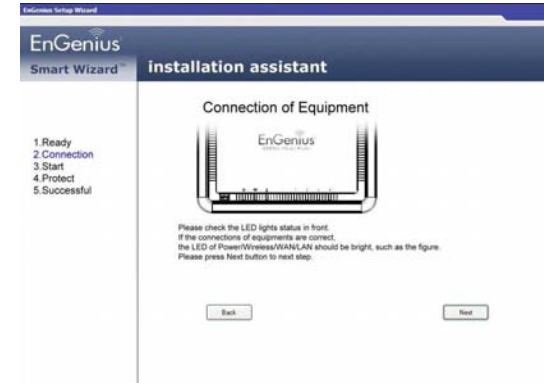
**Step 8**

Click " Next' to proceed to next step



**Step 10**

Click 'Next' to proceed



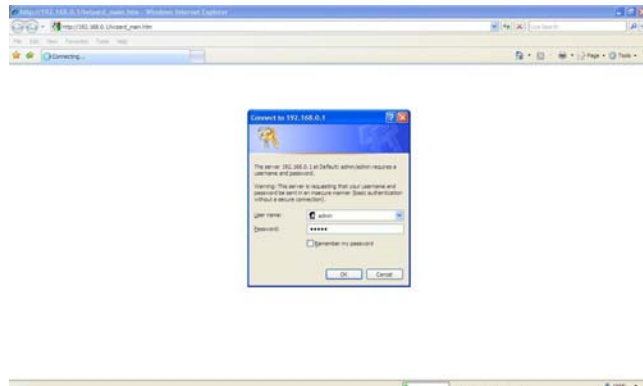
### Step 11

Click 'Next' to proceed



### Step 12

Enter User Name and password 'admin'



### Step 13

Click 'Next' to proceed with Installation.



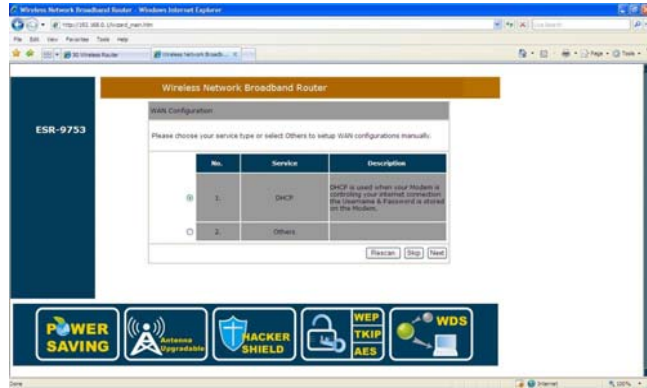
### Step 14

Select 'AP Router Mode' and click 'Next'



### Step 15

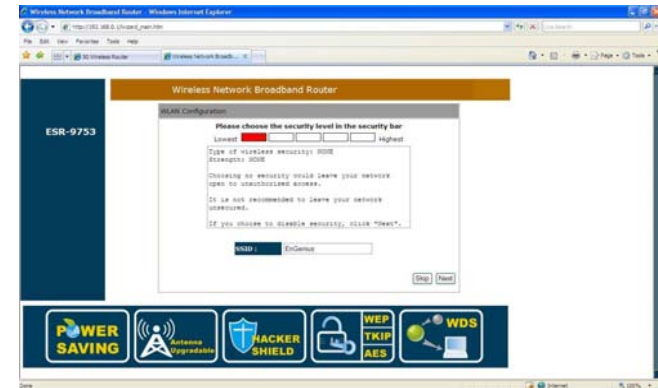
Select 'DHCP' and click 'Next'



### Step 17

Enter Desired SSID to be broadcast, this will be the WiFi name for the user to connect to the router wirelessly.

Click 'Next' after this step have been done to proceed.



### Step 16

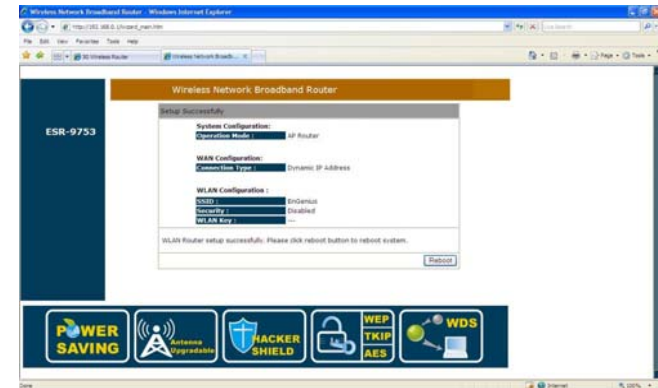
\*\*For M1 and Starhub users Click 'Clone MAC Address' and 'Next'

\* For Singnet users just Click 'Next'



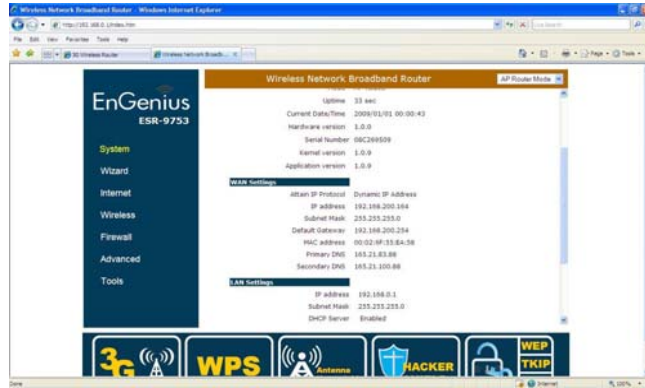
### Step 18

Click 'Reboot' for the router to initialize the configuration.



### Step 19

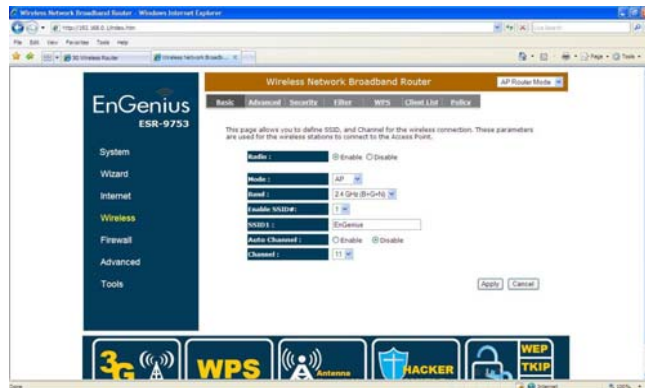
Check WAN connection status to check connection between modem and router



### Step 20

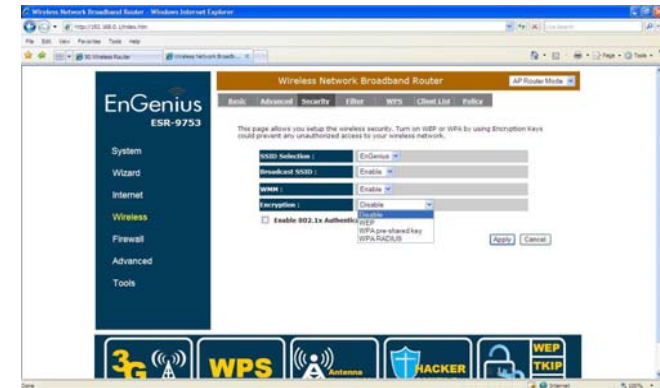
Setup WiFi Security

Click on 'Wireless' to check/amend SSID to desired. Next Click on 'Security' to define WiFi encryption.



### Step 21

Click on 'Encryption' to select desired type of encryption for the router WiFi and input encryption key and Click 'Apply'



### Note

Once setup is completed, power off modem and router. Power up the modem and router at the same time and wait for both the modem and router to completely initialize.